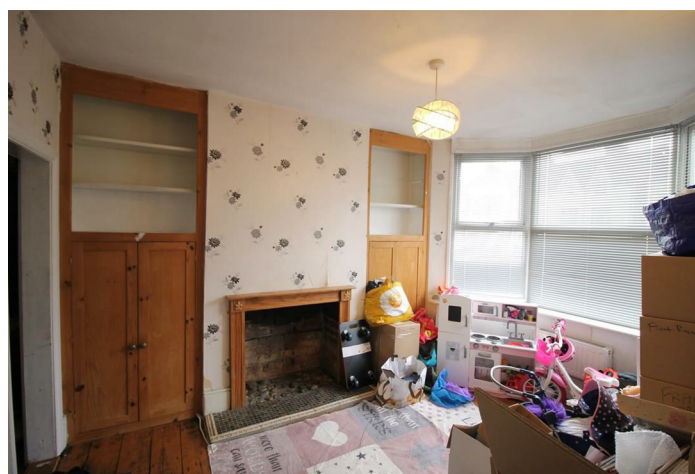
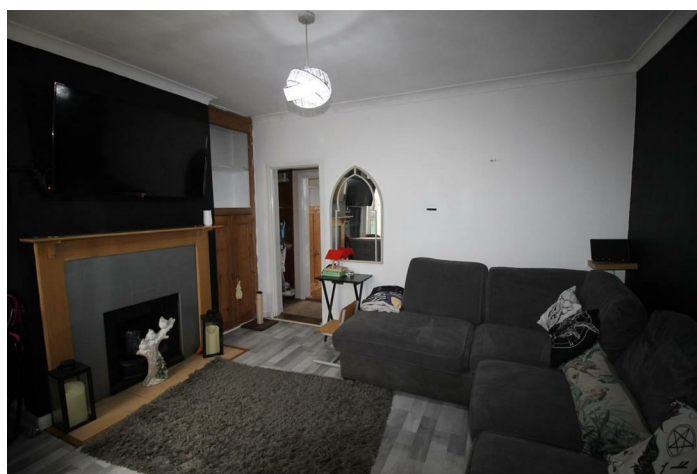


FREEHOLD



House - Terraced (EPC Rating: D)

445 LONDON ROAD, HIGH WYCOMBE,
BUCKINGHAMSHIRE, HP11 1EL

Guide Price

£335,000

**Rye
View**
HOMES



3 Bedroom House - Terraced located in High Wycombe

*** Price Between £335,000 and £355,000 ***

RyeView Homes are pleased to present to the Sales Market this spacious three bedroom terraced house located in the East of High Wycombe, in a popular location, close to the town centre and railway station.

This spacious three bedroom terraced house offers access to both junctions 3 and 4 to the M40 and is a 30 minute walk away from High Wycombe railway station and the town centre.

The property comprises in brief: entrance hall, two spacious reception rooms, three bedrooms, fitted kitchen, utility room, family bathroom.

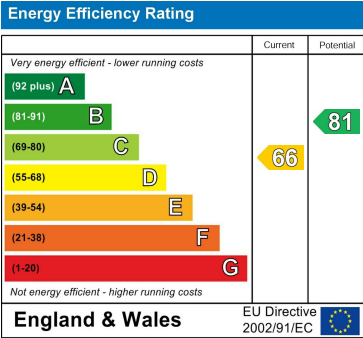
The property further benefits from: gas central heating, UPVC double glazing, enclosed rear garden and driveway parking.



Council Tax Band

D

Energy Performance Graph



Call us on
01494 510099
info@ryeviewhomes.com
ryeviewhomes.com

Agents Note: Whilst every care has been taken to prepare these particulars, they are for guidance purposes only. All measurements are approximate and are for general guidance purposes only and whilst every care has been taken to ensure their accuracy, they should not be relied upon and potential buyers are advised to recheck the measurements.