

LEASEHOLD



Flat (EPC Rating: C)

**24, GUILDMASTER COURT DESBOROUGH  
ROAD, HIGH WYCOMBE,**  
Guide Price

**£190,000**

**Rye  
View**  
HOMES



# 1 Bedroom Flat located in High Wycombe

RyeView Homes are pleased to market for sale this well presented one bedroom first floor flat, located within a modern development within walking distance to High Wycombe town centre and train station.

The property comprises open-plan living room and kitchen, one double bedroom and bathroom. Further benefits include balcony, security entry system, communal elevator, residents parking, gas central heating and double glazing.

## Parking

Gated Residents Permit Parking

## Tenure

Leasehold - 87 Years Remaining

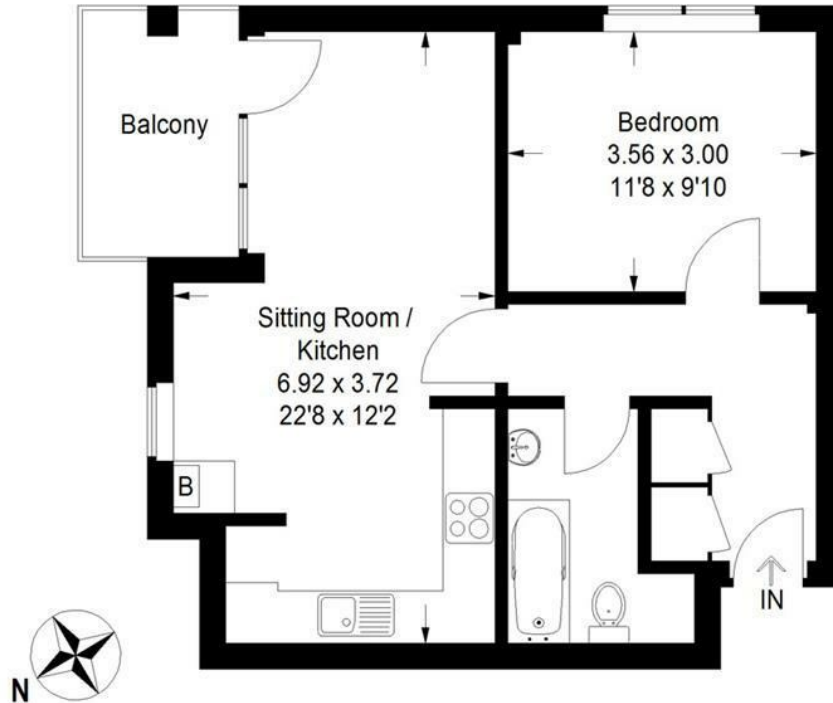




RYEVIEW HOMES | 7 CRENDON STREET, HIGH WYCOMBE, BUCKINGHAMSHIRE, HP13 6LE

# Guildmaster Court High Wycombe

Approximate Gross Internal Area = 47.6 sq m / 512 sq ft



## First Floor

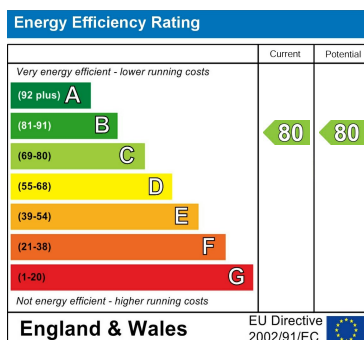
Illustration for identification purposes only, measurements are approximate, not to scale.

COPYRIGHT RYEVIEWS HOMES REF RV1122

Council Tax Band

**B**

Energy Performance Graph



Call us on

**01494 510099**

[info@ryevviewhomes.com](mailto:info@ryevviewhomes.com)

[ryevviewhomes.com](http://ryevviewhomes.com)

Agents Note: Whilst every care has been taken to prepare these particulars, they are for guidance purposes only. All measurements are approximate and are for general guidance purposes only and whilst every care has been taken to ensure their accuracy, they should not be relied upon and potential buyers are advised to recheck the measurements.