

AVAILABLE



Cluster House

34 CAIRNSIDE, HIGH WYCOMBE, HP13 7SB

PCM

£1,000 PCM

FEATURES

- One Bedroom House
- Gas Central Heating
- Close to local amenities
- Available immediately
- Street Parking
- Unfurnished



**Rye
View**
HOMES

We are pleased to present this one bedroom end terrace home located in the popular residential North East High Wycombe within walking distance of The Retail Park.

The property comprises one bedroom, reception room, kitchen and bathroom. Further benefits include street parking, gas central heating and proximity to local amenities.

This property is available immediately on an unfurnished basis.

Deposit: £1,153.84

Council Tax band: B

Summary of fees charged for lettings

Rent excludes the tenancy deposit and any other permitted payments.

Holding Deposit

The Tenant will be liable to pay an amount equal to 1 weeks rent.

Tenancy Deposit

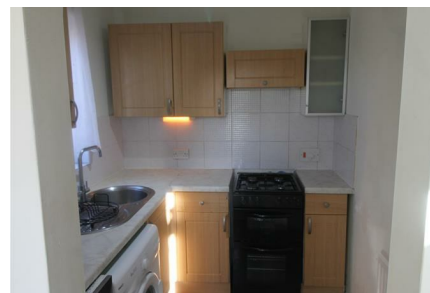
A maximum of 5 weeks' rent.

Tenant Protection

RyeView Homes is a member of the Deposit Protection Scheme - an approved

scheme. RyeView Homes is proud to be a member of the Propertymark Client Money Protection Scheme.

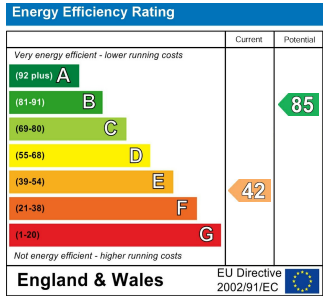
NOTE: These particulars are intended only as a guide to prospective Tenants to enable them to decide whether to make further enquiries with a view to taking up negotiations but they are otherwise not intended to be relied upon in any way for any purpose whatsoever and accordingly neither their accuracy nor the continued availability of the property is in any way guaranteed and they are furnished on the express understanding that neither the Agents nor the Vendors are to be or become under any liability or claim in respect of their contents. Any prospective Tenant must satisfy himself by inspection or otherwise as to the correctness of the particulars contained.



RYEVIEW HOMES | 7 CRENDON STREET, HIGH WYCOMBE, BUCKINGHAMSHIRE, HP13 6LE

Call us on
01494 510099
info@ryeviewhomes.com
ryeviewhomes.com

Council Tax Band
B



Agents Note: Whilst every care has been taken to prepare these particulars, they are for guidance purposes only. All measurements are approximate and are for general guidance purposes only and whilst every care has been taken to ensure their accuracy, they should not be relied upon and potential buyers are advised to recheck the measurements.

